

NORTHWOODS COMMONS

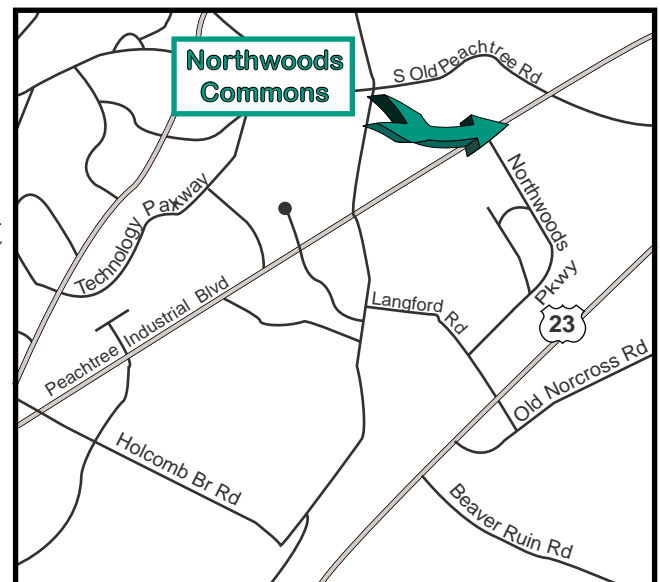
4940 - 5000 PEACHTREE INDUSTRIAL BOULEVARD

NORCROSS, GEORGIA



FEATURES

- 3 Buildings 100,590 Square Feet
- Frontage on Peachtree Industrial Boulevard
- Attractive, Heavily Landscaped Environment
- 14' Clear Ceiling Height
- Grade Level Loading
- Close Proximity to a Variety of Restaurants, Banks, Hotels and Golf Courses



For more information contact:

Matt Davis and Michael Howell

770-436-3400

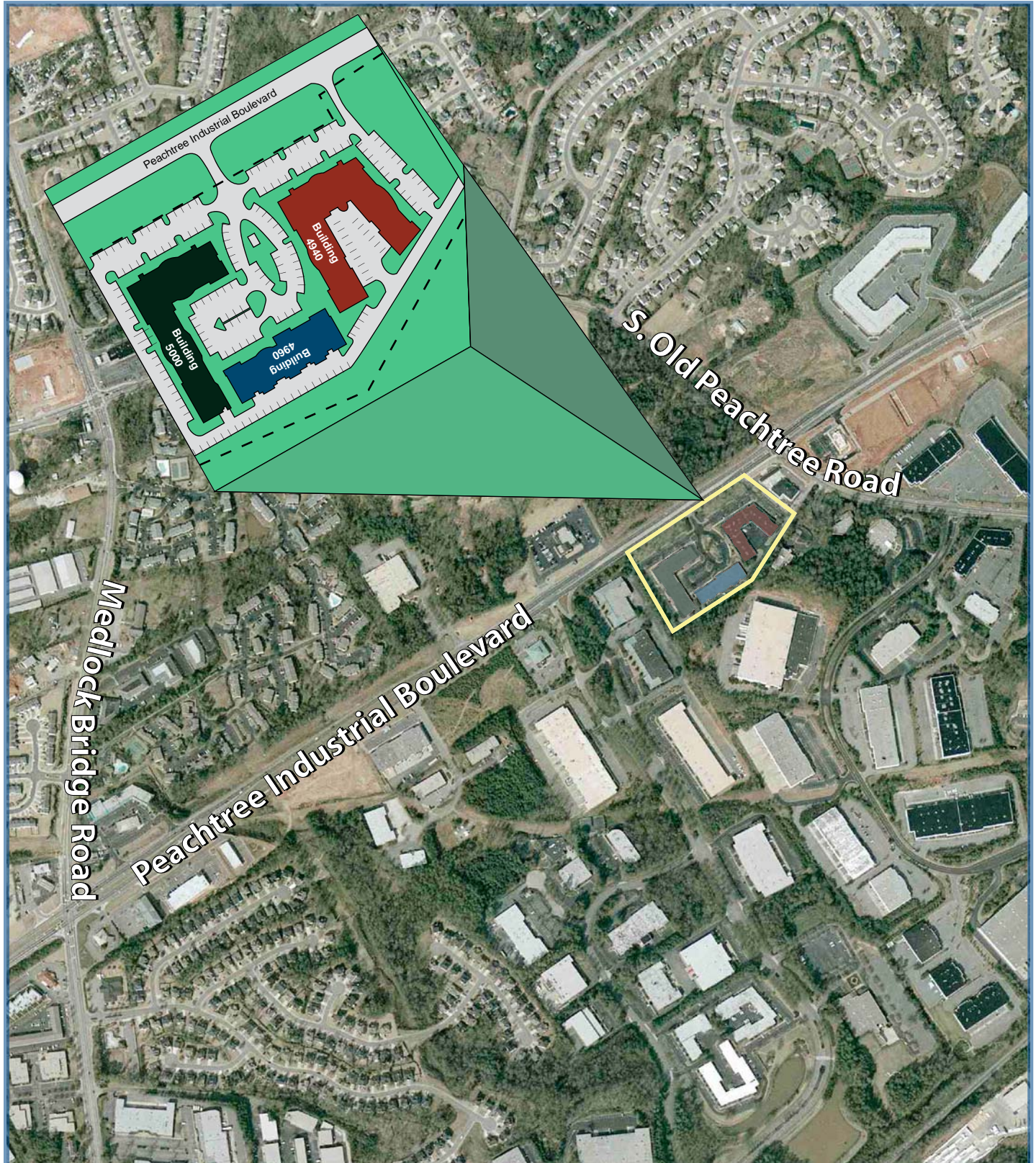


Information contained herein has been provided to broker by owner or from other sources. We have no reason to doubt its accuracy, but we do not guarantee it. Broker disclaims all expressed or implied responsibilities for omissions, errors, environmental conditions of soil/structure, operating systems, the roof, price and compliance with applicable laws. Suitability for intended use or any other matter is the responsibility of purchaser or tenant. Prospective purchasers or tenants agree to independently obtain and analyze all material information.

NORTHWOODS COMMONS

4940 - 5000 PEACHTREE INDUSTRIAL BOULEVARD

NORCROSS, GEORGIA



For more information contact:

Matt Davis and Michael Howell

770-436-3400

